

**Class 12**  
**Module – 9 Painting- A Survey**  
**Worksheet**

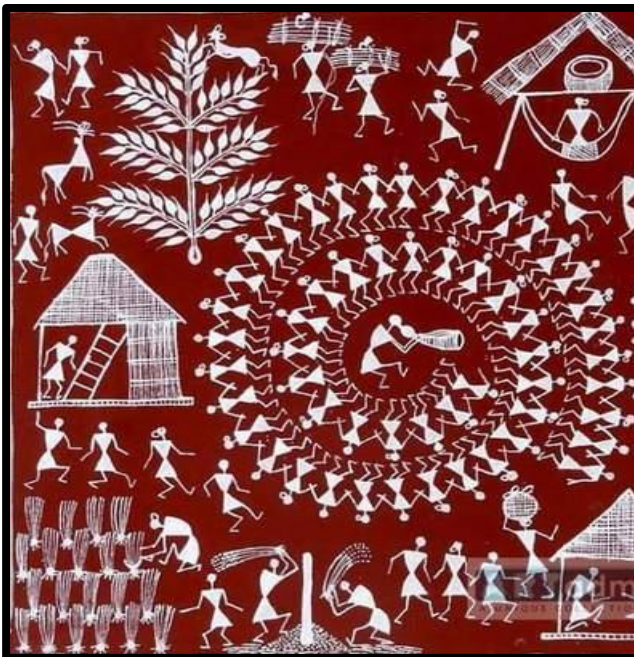
**Identify the type of painting from the pictures given.**

1.



Ans. \_\_\_\_\_

2.



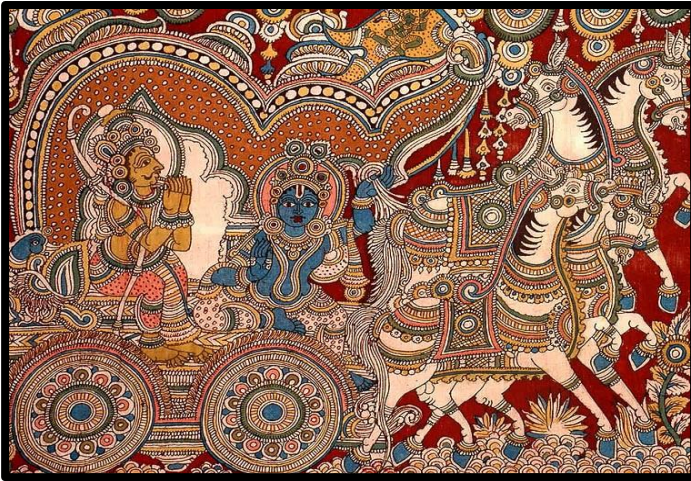
Ans. \_\_\_\_\_

3.



Ans. \_\_\_\_\_

4.



Ans. \_\_\_\_\_

5.





Ans. \_\_\_\_\_

6.



Ans. \_\_\_\_\_

7.





Ans. \_\_\_\_\_

8.



Ans. \_\_\_\_\_

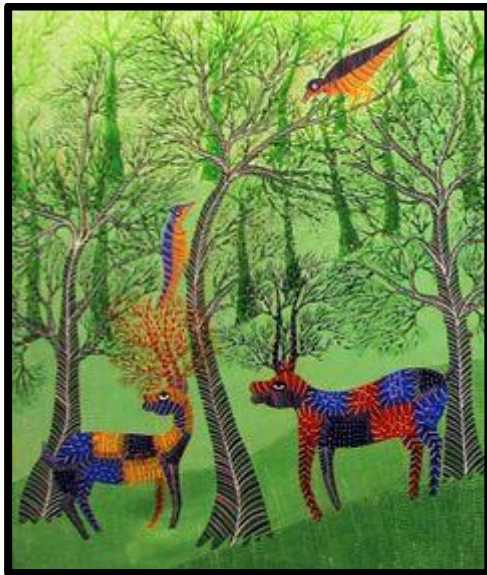
9.





Ans. \_\_\_\_\_

10.



Ans. \_\_\_\_\_

### Answers

1. Mural
2. Warli art
3. Mysore
4. Kalamkari
5. Madhubani
6. Mughal
7. Tanjore/Tanjavur
8. Rajput school
9. Pattacitra
10. Gond art